

1 Nuthatch Close - Guide Price £250,000

Stowmarket IP14 5BF

shires

Estate & Letting Agents



"Consistently providing outstanding service to our clients"

Guide Price £250,000

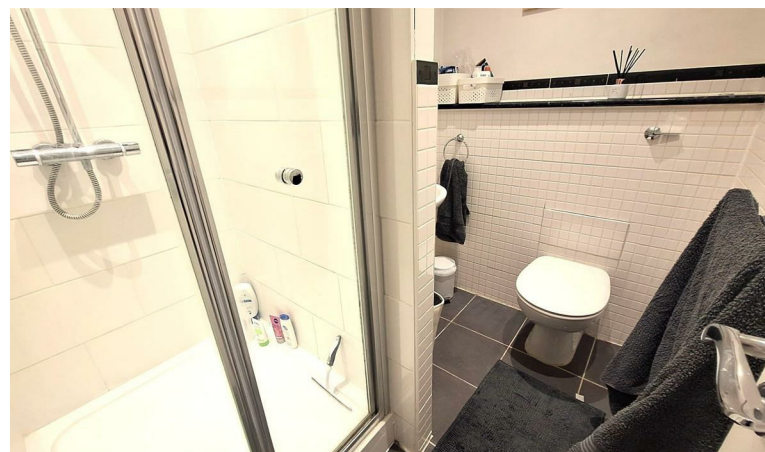
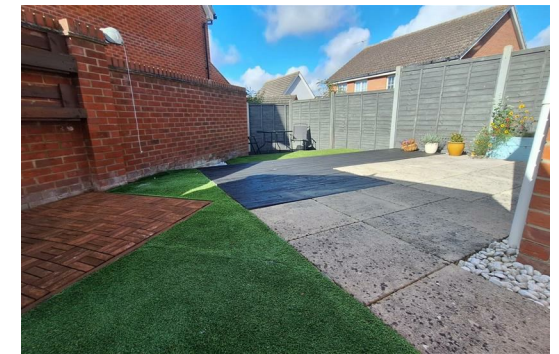
The Property

A well maintained and well presented three story, three bedroom town house located on the ever popular Cedars Park development to the north of Stowmarket. The property is within walking distance of the town centre and rail station. To the ground floor the accommodation is open plan with a Sitting room and a well fitted Kitchen/Dining Room with glazed vaulted ceiling and doors to the rear garden, Cloakroom, on the second floor there are two Bedrooms and a Shower Room and to the third floor there is a large Bedroom with built in wardrobes and an En Suite Bathroom. To the outside the property benefits from an enclosed rear garden and allocated parking to the front.

Features

- THREE STOREY THREE BEDROOM TOWN HOUSE
- WELL PRESENTED ACCOMMODATION
- OPEN PLAN SITTING ROOM/KITCHEN/DINING ROOM
- THREE BEDROOMS
- SHOWER ROOM AND EN SUITE BATHROOM
- ENCLOSED REAR GARDEN
- ALLOCATED PARKING
- GAS FIRED CENTRAL HEATING
- GOOD ACCESS TO STOWMARKET TOWN CENTRE





These sales particulars have been produced as a general guide only and we would draw to your attention that we have not carried out a detailed Survey of the property nor have we tested services, appliances or specific fittings. Whilst measurements and statements given within the details are provided in good faith, their accuracy should not be relied upon. If there are any points about which you may be uncertain or would like further clarification, we would suggest that you telephone this office and speak to our staff who will endeavour to assist you.



செயல்

FT.

OR
T

OR

